

“Gheorghe Dima” National Academy of Music,  
Cluj-Napoca



**FACULTY OF THEORETICAL STUDIES**

**ADMISSIONS**

**2022**

# **“GHEORGHE DIMA” NATIONAL ACADEMY OF MUSIC, CLUJ-NAPOCA**

## **FACULTY OF THEORETICAL STUDIES**

### **2021 ADMISSIONS CALENDAR**

#### **“Gheorghe Dima” National Academy of Music [ANMGD]**

25 I. C. Brătianu str., 400079 Cluj-Napoca, Romania

Tel. / Fax: +40-264-593879

[www.anmgd.ro](http://www.anmgd.ro)

#### **Department of International Relations**

Associate Professor **Oana BĂLAN-BUDOIU, PhD**

E-mail: [oana.balan@amgd.ro](mailto:oana.balan@amgd.ro)

#### **General Music Studies in English Program Coordinator**

Associate Professor **Tudor FERARU, DMA**

E-mail: [tudor.feraru@amgd.ro](mailto:tudor.feraru@amgd.ro)

The ANMGD Faculty of Theoretical Studies organizes admission exams for the Undergraduate Program in Music (3 years), in English.

## **TUITION FEES AND PROGRAM DISCIPLINES**

### **EU CANDIDATES**

(including Romanian citizens who wish to study in English):

According to Parliament Act 316/12.07.2006, citizens of the European Union, of the European Economic Area and of the Swiss Confederation, have the right to apply to study in Romania under the same conditions as Romanian citizens. Conditions are detailed on page 8 of this brochure.

Entering on budgeted places assures free education on the program's fundamental, compulsory, optional and specialty.

The Bachelor's Program can also be followed by tax, if not entering on budgeted places. The fee is 3500 RON / year – approx. 750 EUR / year.

The faculty also offers 7 specialized modules in Conducting, Composition, Traditional Vocal Music, Popular Music / Jazz Music, Instrument Performance, Singing - Lied - Oratorio, Performance Arts.

After admission the students can enroll to one or more of these modules, for the fee of 250 Eur/year/module or 300 Eur for the Instrument performance (1000 RON for Romanian citizens).

### **NON-EU CANDIDATES**

Individuals from outside the EU may be accepted within the Romanian National Education System. Conditions are detailed on page 9 of this brochure.

The fees for Non-Eu candidates are the following:

- 420 Eur/month for Bachelor's program's fundamental, compulsory, optional and specialty disciplines
- 250 Eur/year for specialized modules in Conducting, Composition, Traditional Vocal Music, Popular Music/Jazz Music, Singing - lied - oratorio, Performance Arts and 300 Eur for the Instrument performance module.

## **BACHELOR's Program Disciplines**

### **1. Fundamental**

Musical Aesthetics  
Musical Forms and Analysis  
Introduction to Artistic Management  
Music History  
Music Theory – Solfege – Dictation Compulsory  
Choral arrangement  
Harmony  
Piano complementary  
Polyphony - (Counterpoint and Fugue)  
Artistic Practice  
Vocal Repertoire and Instrumental Teaching Practice  
Theory of Musical Instruments

### **2. Compulsory**

Choral Arranging  
Harmony  
Piano Complementary  
Polyphony - (Counterpoint and Fugue)  
Artistic Practice  
Vocal Repertoire and Instrumental Teaching Practice  
Theory of Musical Instruments

### **3. Specialty**

Choral Ensemble  
Choral Singing  
Choral Conducting  
Aural Skills  
Romanian Musical Folklore  
Musical Education Systems  
Scientific Research Technique

### **4. Optional** (the student can choose two subjects from the following)

Computer application in musical field  
Electronic Music Technology  
Biblioteconomy  
Folk Traditional Music Singing  
Sound Recording  
Secretarial Work related to the Musical Field

## **SPECIALISED MODULES**

### **1. CONDUCTING**

Orchestral Conducting – symphonic and orchestral accompaniment  
Choral Conducting – a cappella, vocal symphonic and opera repertoire  
The Conductor's Score – Preparation and interpretation

### **2. MUSIC COMPOSITION**

Music composition

Orchestration  
Interactive Music Systems

**3. TRADITIONAL VOCAL MUSIC**

Traditional Music Ensemble  
Notation and Restoration of Traditional Vocal Music

**4. POPULAR MUSIC / JAZZ MUSIC**

Popular Music Performance / Jazz Performance (voice, saxophone, guitar, percussion, keyboard)  
Jazz Composition  
Ensemble (Promenade / Big Band / Vocal / Percussion / Pop / Rock)  
Arranging (Vocal and instrumental)

**5. SINGING - LIED - ORATORIO**

Singing - Lied / Oratorio  
Opera Class  
Actor's art

**6. PERFORMANCE ARTS**

Musical Theatre  
Directing  
Choreographic  
Improvisation  
Actor's Art

**7. INSTRUMENT PERFORMANCE**

Piano, organ, violin, oboe, percussion  
Chamber Music  
Orchestra -strings / winds  
Piano  
    Repertoire analysis - piano  
    Piano accompaniment study  
Organ  
    Repertoire analysis  
    Figured bass – accompaniment

**ADMISSION SESSIONS AND RESULTS**

The admission exams year for the Theoretical Faculty will be organized in **two sessions**:

- <b>First session</b> – July 2021	- the information about enrolment and admissions exams will be published on the ANMGD website.
- <b>Second session</b> – September 2021	- the information about enrolment and admissions exams will be published on the ANMGD website.

The admission exams are comprised of:

- **Test 1: Music theory and dictation test (written)**
- **Test 2: Solfège and vocal test (practical)**

Results will be announced after each test. Grades range from 1 (the lowest) to 10 (the highest). Failure to pass any of the tests leads to elimination from the admission process. The final grade represents the average test score of the two tests. Applicants will be admitted

strictly in the descending order of the final grades. The minimum admission grade is 5.00 (five) for each of the two tests. If there are two or more candidates with equal grades on the last available place, the following criteria apply (in this order):

- a) The grade obtained at the **written test**;
- b) the grade obtained at the **practical test**;
- c) the average grade obtained at the **baccalaureate exam** (secondary education / high school final examination).

Only the results of the written test may be disputed. Appeals will be addressed to the Admission Committee of the Faculty of Theoretical Studies within 24 hours, and they will be decided on within 48 hours. The decision of the Committee is final.

If an applicant declines the offer of admission, their place will be given to the following applicant, according to the criteria described above.

During the admission process, the National Academy of Music offers on-campus accommodation.

### **TOPICS OF THE ADMISSION TESTS**

1. The **music theory and dictation** test aims at checking knowledge of music intervals, chords, keys, rhythm and meter, as well as musical abilities: harmony, rhythm, melody, ear training.
2. The **solfège and vocal test** comprises:
  - a) sight reading of a solfège in treble and bass clefs, in keys up to 4 sharps / flats, in 2/4, 3/4 or 4/4 meter;
  - b) singing from memory a vocal piece (without accompaniment) previously prepared by the applicant (art song, aria, folk song, etc.).

## EXAMPLES OF SOLFEGE

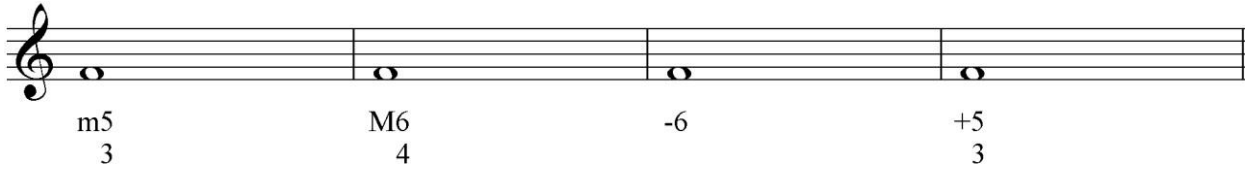




- V. a) Notate the following triads, after dictation:  
(Each triad is played 3 times)



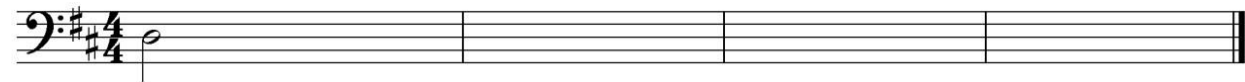
- b) Complete the following triads, with the fundamental note F:  
(Time: 3 minutes)



- VI. a) Reproduce in writing, from memory, the following melodic line:  
(The fragment is played 3 times)

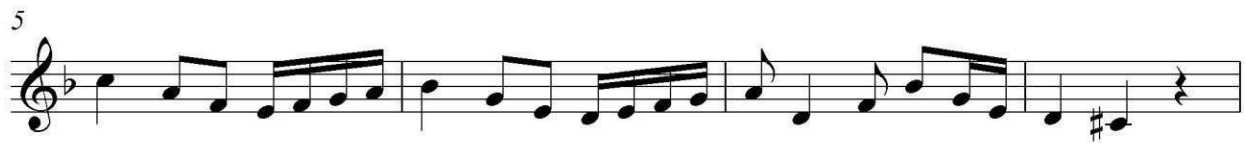


- b) Transpose the previous fragment an octave lower, in bass clef:  
(Time: 3 minutes)



- VII. Notate the following melodic line, after dictation:

(The fragment is once played through entirely, then broken up into shorter segments – each individual segment 4 times, and two extra times in connection to the subsequent segment)





# GENERAL CONDITIONS

## EU CANDIDATES

(including Romanian citizens who wish to study in English):

According to Parliament Act 316/12.07.2006, citizens of the European Union, of the European Economic Area and of the Swiss Confederation, have the right to apply to study in Romania under the same conditions as Romanian citizens.

The candidates who want to register for studies at the National Academy of Music “Gheorghe Dima” must complete the following steps:

1. have their **degrees / diplomas recognized** and validated by the Romanian National Centre for the Recognition and Validation of Diplomas (for studies completed in other European countries except Romania),
2. take **the admission tests** under the same conditions as Romanian citizens,
3. obtain an **English language certificate** issued either by a certified body (accredited language department in Romania or abroad), or one that is internationally recognized (e.g. Cambridge Language Certificate, TOEFL, or others as such).

## RECOGNITION AND VALIDATION OF DEGREES / DIPLOMAS

Candidates who have completed high-school education in European countries, other than Romania, must have their high-school diploma endorsed by the Romanian National Centre for the Recognition and Validation of Diplomas (a department of the Romanian National Education Ministry).

C.N.R.E.D will issue the equivalent of diplomas for studies completed abroad in countries of the European Union (other than Romania), for citizens of the European Union, of the European Economic Area and of the Swiss Confederation.

Documents needed for the recognition of studies completed abroad must be sent by mail or courier to the Ministry of Education and Research / C.N.E.R.D, no later than 15 days prior to the deadline for registering to the admission exam.

Documents may also be submitted directly at the National Academy of Music “Gheorghe Dima”, at the Chief Secretary Office, who will send them by Post to C.N.R.E.D. The candidates must submit the files at least one month prior to the deadline for registering to the admission exam.

## **Necessary documents for pre-registration and recognition / validation of degrees / diploma(s) by the Ministry of Education and Research (2 sets of each):**

1. **Application Form** – (EU, EEA, Swiss Confederation),
2. <https://cnred.edu.ro/en/recognition-studies-european-citizens-admission-undergraduate-studies-in-Romania>
3. **High-school diploma** – two (2) authenticated photocopies and 2 authenticated translations (from a public notary office),
4. **High-School Transcript of Records** – 2 authenticated photocopies and 2 authenticated translations,
5. **Personal identification document** – copy of identity card or copy of passport, pages 1–4
6. **Birth Certificate** – 2 authenticated copies and 2 notarized translations,
7. **Marriage Certificate** (if applicable, to prove the name change) – 2 authenticated copies and 2 notarized translations,
8. **Four photographs** – passport size;
9. **Medical Certificate** – proving that the candidate is physically and mentally fit to pursue academic studies and has no contagious disease (blood test, chest x-ray and psychological test)

10. **Proof of payment**, in the amount of RON 50, paid to the Beneficiary: Ministerul Educației (Ministry of Education)

- Fiscal Code: 13729380
- Bank: Direcția de Trezorerie și Contabilitate Publică a Municipiului București -DTCPMB
- IBAN: RO 27 TREZ 7005 003 XXX 0000 69 (this IBAN Code must be clearly specified)
- SWIFT: TREZROBU
- BIC Code: TREZ

## **SPECIAL PROVISIONS**

High-school diplomas issued in countries listed below should be accompanied by the following:

Cyprus – Pankypriakes exetaseis – Ypiresia Exetaseis (average 10) or

Öğrenci Seçme Sınavı Greece – Panelladikes exetaseis (for general lyceum) – average 10

Portugal – Provas de Ingresso

Spain – "Pruebas de Aptitud para el Acceso a la Universidad, calificación Apto"

Sweden – certificate from Verket för högskoleservice (Swedish National Agency for Higher Education) regarding access to Higher Education studies

Documents that are not in English or French must be accompanied by a notarized translation into English or into Romanian.

Graduation diplomas from Italy, Greece, Spain, Portugal and Cyprus must be stamped with The Hague Apostille; diplomas from countries which are not signatories of the Hague Apostille Convention must be certified twice: first by the Ministry of Foreign Affairs of the issuing countries, and subsequently by the Romanian Consulate.

When candidates register for studies, they have to submit the Diploma and Transcript of records in original plus notarized translations into Romanian.

## **NON-EU CANDIDATES**

### **CONDITIONS FOR ELIGIBILITY**

Individuals from outside the EU may be accepted within the Romanian national education system if they:

1. have documents to prove the country of origin / citizenship and request registration for studies in Romania at their own expense;
2. hold study documents issued by educational institutions accredited in the country of origin;
3. have submitted their documents before the application deadline;
4. have chosen an accredited public or private educational institution and an accredited specialization /study program;
5. have received the educational unit / institution where they want to study.

**Specific condition** for eligibility:

Passing *the skill tests* organized for the Bachelor's degree program in music, after receiving the letter of acceptance to the corresponding study program.

## REGISTRATION FOR BACHELOR'S DEGREE PROGRAMS

Only high-school graduates who hold a baccalaureate diploma or an equivalent diploma, which allows general access to accredited higher education institutions, may be registered for the first Cycle degree program.

Candidates will submit the application documents directly to the chosen accredited higher education institution. These include the following:

- a) The application for issuing the letter of Acceptance to Studies, all fields entirely filled in, in two copies;
- b) [https://www.amgd.ro/upload/documente/Relatii Internationale/Cerere%20eliberare%20Scris%20de%20Acceptare%202017-2018.pdf](https://www.amgd.ro/upload/documente/Relatii_Internationale/Cerere%20eliberare%20Scris%20de%20Acceptare%202017-2018.pdf)
- c) The studies document – copy and notarized translation – which allows the candidate's access to the respective education program (the baccalaureate diploma or its equivalent);
- d) Academic records – copy and notarized translation – for the completed studies and academic curricula in the case of candidates who request equivalence for certain periods of studies;
- e) Birth certificate – copy and notarized translation;
- f) Copy of the passport – valid at least 6 months past the date when the letter of acceptance to studies is issued;
- g) Medical certificate (in a language of circulation) – proof that the person to be registered for studies does not suffer from infectious diseases or other illnesses that are incompatible with enrolling in post- secondary education.

\*\*\*\*\*

## ENGLISH LANGUAGE REQUIREMENTS

**Applicants may choose to take an internationally recognized English language test (TOEFL, Cambridge, IELTS) and submit the results to ANMGD along with their application. Alternatively, they may register for a language test that can be taken locally, as part of the admission exam.**

\*\*\*\*\*

When the selection process is concluded, candidates will have to provide the requested documents outlined in the application form in original, certified for authenticity by the Embassy of Romania to the issuer country, or endorsed with the Hague Apostil, if previous studies were not completed in Romania, in a EU country or in accordance with the legal assistance agreements signed between Romania and third countries.

For more details regarding the admission process, see: [www.amgd.ro](http://www.amgd.ro)

Tuition fees for foreign citizens from EU and third countries are stipulated in the Ordinance no 22/2009, on establishing the minimum amount of the tuition fees, in foreign currency, for citizens that study in Romania at their own expense, from countries that are not members of the European Union and from those countries that are not part of the European Economic Area and the Swiss Confederation, approved with amendments and completions by Parliament Act 1/2010.

## THEORETICAL FACULTY

### Bachelor degree in English Faculty and Subjects for 2020-2021

Subjects	Name and Surname
Music Theory-Solfège-Dictation Aural skills	Prof. Nelida Nedelcuț, PhD Assoc. Prof. Lucian Ghișă, PhD Assoc. Prof. Bianca Temeș, PhD Assist. Kóter Péter László Assist. Ciprian Nicola
Musical Forms and Analyses	Assoc. Prof. Cristian Bence-Muk, PhD Assist. Török-Gyurko Áron
Choral Conducting	Prof. Cornel Groza, PhD Assoc. Prof. Mihaela Cesa-Goje, PhD
Electronic Music Technology	Assoc. Prof. Ciprian Gabriel Pop, PhD Assist. Sebastian Țună
Introduction to Artistic Management	Assoc. Prof. Mihaela Oana Bălan-Budoiu, PhD CDA Gergely Maria Edith
Harmony Choral Arranging Polyphony (Counterpoint and Fugue)	Assoc. Prof. Tudor Feraru, DMA Assist. Tiberiu Herdlicska
Theory of Musical Instruments	Assoc. Prof. PhD Adrian Borza, PhD Assist. Tiberiu Herdlicska
Choral Ensemble Artistic Practice	Assoc. Prof. Ciprian Para, PhD
Music History	Assist. Prof. Tatiana Oltean, PhD
Choral Singing	Assist. Prof. Claudia Bataragă, PhD
Musical Aesthetics Biblioteconomy	Assist. Prof. Elena Boancă, PhD
Secretarial work Related to the Musical Field	Assist. Prof. Andra Daniela Pătraș, PhD
Romanian Musical Folklore	Assist. Prof. Alina Lucia Stan, PhD
Italian Language	Assist. Prof. Denisa Ionescu, PhD
Vocal repertoire and Instrumental Teaching Practice Musical Education Systems	Assist. Prof. Diana Sârb, PhD
Score Reading	Assist. Alexandru Ștefan Murariu, PhD Assist. Sebastian Țună
Piano- Complementary course	Assist. Luca Toncian, PhD Assist. Bogdan Bohuș, PhD
Physical Education	Assist. PhD. Radu Rozsnyai
Scientific Research Technique	Assoc. Prof. Ciprian Gabriel Pop, PhD Assist. Prof. Diana Sârb, PhD Assist. Prof. Elena Boancă, PhD Assist. Prof. Tatiana Oltean, PhD